

twilight

INSTRUMENTOS DE MEDICIÓN INDUSTRIAL

PosiTector SHD, Shore D, Avanzado, DeFelsko DF-SHDA y DF-SHDD

www.twilight.mx

 / [twilightsadecv](https://www.facebook.com/twilightsadecv)

 / [twilightsadecv](https://twitter.com/twilightsadecv)

 / [twilightsadecv](https://www.youtube.com/twilightsadecv)

PosiTector[®] *SHD*

Shore Hardness Durometer

Measures the hardness of non-metallic materials.
Two models are available – Shore A and Shore D



Available on the
App Store

Bluetooth[®]



WiFi

DeFelsko[®]
The Measure of Quality

PosiTector[®]SHD Shore Hardness Durometer

All Gages Feature...

Simple

- Easy-to-read digital display
- User-adjustable measurement time with onscreen countdown to conform to national and international standards
- RESET feature instantly restores factory settings

Durable

- Solvent, acid, oil, water and dust resistant — weatherproof
- Shock-absorbing, protective rubber holster with belt clip
- Two year warranty on body AND probe

Accurate

- Certificate of Calibration showing traceability to NIST included
- Auto Ignore mode disregards readings below 20 and above 90 per international standards
- Hi-RES mode increases displayed resolution to 0.1
- Includes test block to verify operation
- Conforms to national and international standards including ISO and ASTM

Versatile

- PosiTector body accepts all PosiTector SHD, 6000, 200, SPG, RTR, DPM and UTG probes easily converting from a shore hardness durometer to a coating thickness gage, surface profile gage, dew point meter or wall thickness gage
- Selectable display languages
- High contrast, reversible color LCD with backlit display
- Flip display enables right-side-up viewing
- Uses alkaline or rechargeable batteries (built-in charger)

Powerful

- Continually displays/updates average, standard deviation, min/max hardness and number of readings while measuring
- Screen Capture – save screen images for record keeping and review
- HiLo alarm audibly and visibly alerts when measurements exceed user-specified limits
- USB port for fast, simple connection to a PC and to supply continuous power
- PosiSoft USB Drive – stored readings and graphs can be accessed using universal PC/Mac web browsers or file explorers. No software required.
- Software updates via the internet keep your gage current
- Includes PosiSoft suite of software for viewing and reporting data

Select from two measurement ranges

Probes	Shore A	Shore D
Typical Applications	Soft to hard materials such as soft rubber, elastomers, neoprene, silicone, etc.	Medium to extra hard materials such as hard rubber, epoxies, hard plastics, PVC, acrylic, etc.
Range	0 – 100	
Accuracy	± 1	
Resolution	0.1	

Standard Models

Includes ALL features as shown on left plus...

- Storage of 250 readings—stored readings can be viewed or downloaded

Advanced Models

Includes ALL features as shown on left plus...

- Storage of 100,000 readings in up to 1,000 batches and sub-batches
- Auto Sub-Batch – automatically create sub-batches after the required number of readings are taken
- Live graphing of measurement data
- Batch/Reading annotation—add notes and change batch names with onscreen QWERTY keyboard
- WiFi technology wirelessly synchronizes with PosiSoft.net and downloads software updates
- Data transfer via USB to a PC or via Bluetooth[®] Wireless Technology to a mobile device, PC or printer
- Store thickness, profile, environmental, wall thickness and hardness measurements in individual batches

NEW PosiTector App

- Mobile app connects PosiTector Advanced instruments to your iOS or Android smart device
- Auto-pairing Bluetooth BLE connection
- Easily create custom reports from your measurement data in seconds
- Export readings to PosiSoft Desktop or synchronize readings with PosiSoft.net for further reporting and archival options
- For a complete list of features visit www.defelsko.com/PosiSoft



Accessories

- **Test Blocks** for Shore A or Shore D. Ideal for checking the operation of durometers.
- **Durometer Test Stands** facilitate consistent probe placement. Two models available — Shore A or Shore D.
- **PosiTector SHD Universal Adaptor** for use with threaded mounts in other test stands or calibrators

The PosiTector SHD Shore Hardness Durometer can be used as a handheld instrument or placed in a test stand to reduce operator influence.



All Gages Come Complete with test block, protective rubber holster with belt clip, wrist strap, 3 AAA alkaline batteries, instructions, nylon carrying case with shoulder strap, Long Form Certificate of Calibration traceable to NIST, protective lens shield, USB cable, PosiSoft Software, two (2) year warranty.

Body Size: 137 x 61 x 28 mm (5.4" X 2.4" X 1.1")

Weight: 185 g (6.5 oz.) without batteries

Conforms to ASTM D2240, ISO 868/7267/7619 and DIN 53505

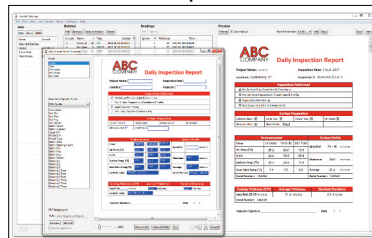
PosiSoft® Suite of Software

Four FREE and unique ways to view and report your PosiTector and PosiTest data

PosiSoft Desktop — PC/Mac

Powerful desktop software for downloading, viewing, printing and archiving measurement data. No internet connection required.

- Import readings directly from the gage via USB or from legacy PosiSoft desktop versions
- Synchronize measurement data including readings, notes and pictures to and from PosiSoft.net
- Import/Export Templates and Jobs to share with other users
- Import PDF forms and overlay **Custom Fields** for automatic population of inspection and measurement data
- Report preview automatically refreshes as changes are made



Prompted Batch Mode

Create pre-defined batches with onscreen text and image prompts for each reading and upload to PosiTector 6000 gages (*Advanced models only*).

- Ideal for ensuring a consistent measurement pattern for repetitive jobs or when specific measurement locations are required
- Create and store multiple templates for different jobs



PosiTector App — Mobile

Mobile app connects PosiTector Advanced instruments, the PosiTector SmartLink and the PosiTest AT-A to your *iOS* or *Android* smart device.

- Auto pairing Bluetooth BLE connection
- Automatically generate user-formatted reports and share via email, text, cloud storage services like Dropbox, and more
- Export readings to PosiSoft Desktop or synchronize readings to and from PosiSoft.net for further reporting and archival options

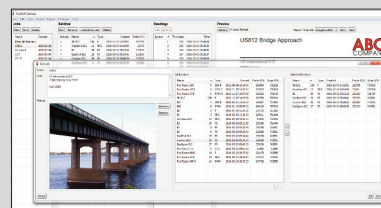
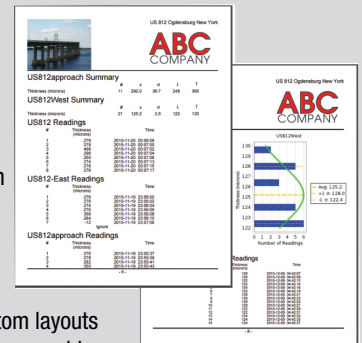


PosiSoft Custom PDF Report Generator

Easily create reports from your measurement data in seconds.

featured on
PosiSoft Desktop
PosiSoft.net
PosiTector App

- Include inspection information such as on-site pictures, screen captures, notes and more to communicate important details
- Create and save multiple custom layouts as templates – insert cover pages, add logos/images, and select font and point size
- Select the information to include for each product type – charts, histograms, readings, time stamps and more
- Compile multi-batch reports from one or more probes and instrument types
- Export readings as comma separated value (.CSV) files which can easily be imported into Excel and other supporting applications

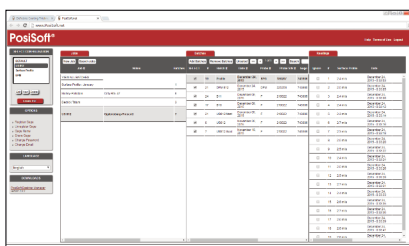


Jobs feature consolidates batches into groups to keep measurement data organized and to quickly create multi-batch reports (not available on PosiTector App)

PosiSoft.net — Web-based

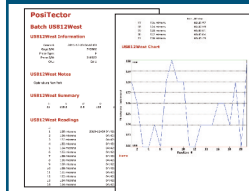
A web-based application offering secure centralized management of readings. Access your data from any web-connected device.

- Synchronize data when connected via USB or WiFi
- Synchronize measurement data including readings, notes and pictures with PosiSoft Desktop and PosiTector App
- Securely store measurement data in the cloud and share with authorized users via a secure login



Jobs Batches Readings

PosiSoft USB Drive — Gage Based



A simple gage interface to retrieve data in a manner similar to USB flash drives, cameras, or digital audio players. No software to install or internet connection required.

- View and print readings and graphs using universal PC/Mac web browsers and file explorers
- Measurement data can be printed quickly from a formatted HTML report or exported in .CSV format for further analysis in spreadsheets
- Simple file management - Copy and paste measurement data from the PosiTector to a local folder on your computer, network folder or cloud drive
- Access stored screen captures (snapshots) of the PosiTector display



PosiTector and PosiTest AT-A instruments can integrate with third-party software, drones, ROVs, PLCs, and robotic devices using several industry-standard communication protocols.

PosiTector Developer Resources

including Bluetooth 4.0, WiFi, USB Keyboard, and USB Serial

DeFelsko®
The Measure of Quality

DeFelsko Corporation • 800 Proctor Ave. • Ogdensburg, New York 13669-2205 USA
Toll Free 1-800-448-3835 • Tel: +1-315-393-4450 • Fax: +1-315-393-8471
techsale@defelsko.com • www.defelsko.com



twilight

INSTRUMENTOS DE MEDICIÓN INDUSTRIAL



LLÁMANOS

+52(81) 8115-1400 / +52 (81) 8173-4300

LADA Sin Costo:
01 800 087 43 75

E-mail:
ventas@twilight.mx

www.twilight.mx



/ [twightsadecv](https://www.facebook.com/twightsadecv)



/ [twightsadecv](https://twitter.com/twightsadecv)



/ [twightsadecv](https://www.youtube.com/twightsadecv)