

twilight

INSTRUMENTOS DE MEDICIÓN INDUSTRIAL

Medidor de perfil de anclaje PosiTector SPG-S sonda separada DF-SPGS1-E

www.twilight.mx



/ twilight sadcv



/ twilight sadcv



/ twilight sadcv

PosiTector® *SPG* Series

Surface Profile Gages for blasted steel,
textured coatings and concrete



NEW surface profile probe
for outside diameters

DeFelsko®
The Measure of Quality

 **Bluetooth®**


WiFi

 Available on the
App Store



PosiTector®
SmartLink™
Compatible

PosiTector® *SPG Series*

All Gages Feature...

Simple

- Fast measurement rate of over 50 readings per minute—ideal for quickly and accurately measuring large surface areas
- Enhanced one-handed menu navigation
- RESET feature instantly restores factory settings

Durable

- Alumina wear face and tungsten carbide tip for long life and continuous accuracy—field replaceable tips
- Solvent, acid, oil, water and dust resistant—weatherproof
- Rugged, indoor/outdoor instrument—ideal for field or shop use
- Shock-absorbing, protective rubber holster with belt clip
- Two year warranty on gage body AND probe

Accurate

- Certificate of Calibration showing traceability to PTB included
- Built-in temperature compensation ensures measurement accuracy
- Glass zero plate and metal shim included
- Conforms to national and international standards including ASTM

Versatile

- PosiTector body accepts all PosiTector SPG, RTR, 6000, 200, DPM, SST, SHD, BHI and UTG probes easily converting from a surface profile gage to a coating thickness gage, dew point meter, soluble salt tester, hardness tester or ultrasonic wall thickness gage
- Cabled probes available for blasted steel, textured coatings and concrete profile
- High contrast LCD with backlit display
- Flip Display enables right-side-up viewing
- Uses alkaline or rechargeable batteries (built-in charger)

Powerful

- Continually displays/updates average, standard deviation, min/max depth and number of readings while measuring
- Screen Capture—save screen images for record keeping and review
- HiLo alarm audibly and visibly alerts when measurements exceed user-specified limits
- Sealed USB port for fast, simple connection to a PC and to supply continuous power. USB cable included.
- PosiSoft USB Drive—stored readings and graphs can be accessed using universal PC/Mac web browsers or file explorers. No software required.
- Software updates via the internet keep your gage current
- Every stored measurement is date and time stamped
- Includes PosiSoft suite of software for viewing and reporting data

PosiSoft®... *FREE SOLUTIONS for viewing, analyzing and reporting data:*



PosiSoft Desktop

Powerful desktop software for downloading, viewing, printing and storing measurement data. Includes customizable, templated PDF Report Generator. No internet connection required.

Standard Models

Includes ALL features as shown on left plus...

- Storage of 250 readings per probe—stored readings can be viewed or downloaded

Advanced Models

Includes ALL features as shown on left plus...

- Storage of 100,000 readings from multiple probes in up to 1,000 batches and sub-batches
- SmartBatch™ allows entry of user-defined parameters and criteria for quick statistical analysis to comply with standards such as ASTM D4417
- Live graphing of measurement data
- WiFi technology wirelessly synchronizes with PosiSoft.net and downloads software updates
- **Bluetooth 4.0 Technology** for data transfer to a mobile device running the PosiTector App or optional portable printer. **BLE API** available for integration into third-party software.
- Onscreen Batch Annotation—add notes, change batch names and more with built-in QWERTY keyboard

PosiTector® *SmartLink™* Compatible

- Wirelessly connect PosiTector SPG probes to your smart device
- Turns your cell phone or tablet into a virtual PosiTector gage
- Includes free mobile app



PosiSoft.net

A web-based application offering secure centralized management of readings. Includes customizable, templated PDF Report Generator. Access your data from any web-connected device.



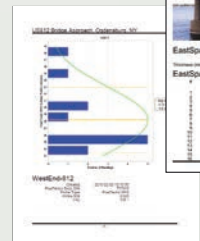
PosiTector App

Mobile app connects PosiTector Advanced instruments, the PosiTector SmartLink and the PosiTest AT-A to your iOS or Android smart device.



PosiSoft USB Drive

A simple gage interface to retrieve data in a manner similar to USB flash drives, cameras, or digital audio players. No software to install or internet connection required.



Select from Five Models

for Blasted Steel



Range	0–500 μm 0–20 mils	
	Accuracy	
		$\pm(5 \mu\text{m} + 5\%)$ $\pm(0.2 \text{ mils} + 5\%)$
Tip	Angle	60°*
	Radius	50 μm (2 mils)

*30° tips available for conformance to Australian standard AS 3894.5-C

Ideal for measuring the surface profile of steel cleaned by abrasive blast

Integral Probe — SPG

Integral probe ideal for one-handed operation

Cabled Probe — SPG S

Probe mounted on a 1m/3ft cable for enhanced ergonomics and access to hard-to-reach areas



Cabled Probe for Convex Surfaces — SPG OS

Probe mounted on a 1m/3ft cable with a V-groove sleeve ideal for measuring convex surfaces such as tanks and pipes

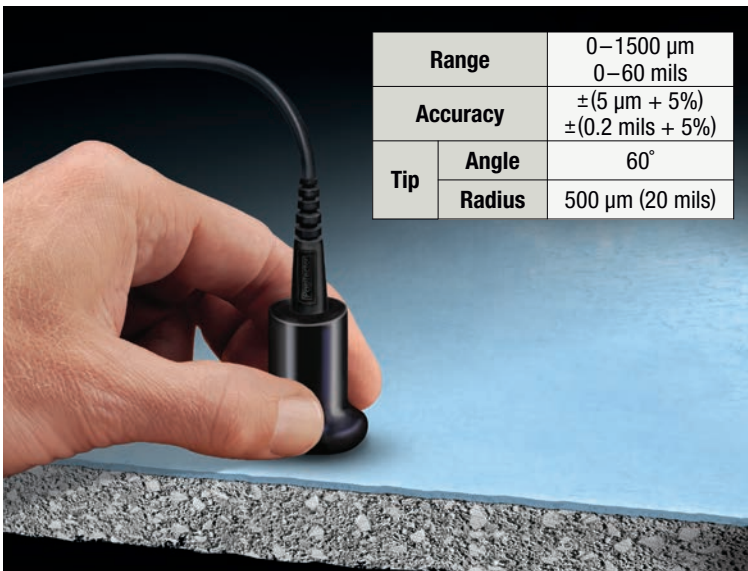
- Ideal for measuring on flat and curved surfaces with an OD greater than 3mm (0.125")
- Proprietary OD Mode analyzes multiple measurements for greater accuracy on convex surfaces
- Normal Mode is ideal for flat surfaces, and operates similarly to the PosiTector SPG and SPGS probes
- Self-leveling probe foot ensures perpendicularity to the part being measured
- Uses the proven V-groove design found on PosiTector 6000 coating thickness probes to stabilize the probe on any diameter
- Available Large V-groove Adaptor for enhanced stability on 30-45cm (12-18") OD pipes



for Textured Coatings

Cabled Probe for Textured Coatings — SPG CS

Ideal for measuring the surface profile of textured coatings and other surface profile applications

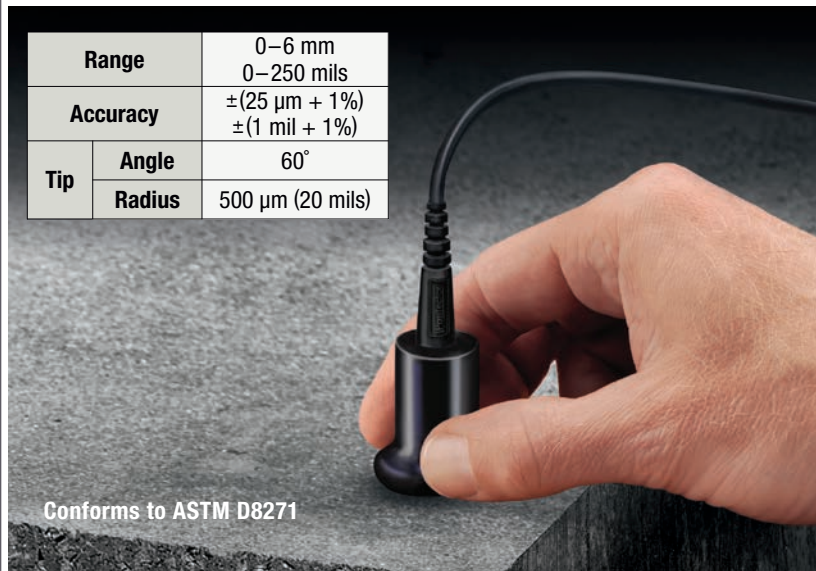


Range	0–1500 μm 0–60 mils	
	Accuracy	
		$\pm(5 \mu\text{m} + 5\%)$ $\pm(0.2 \text{ mils} + 5\%)$
Tip	Angle	60°
	Radius	500 μm (20 mils)

for Concrete Profile

Cabled Probe for Concrete Profile — SPG TS

Ideal for measuring the surface profile of concrete created by blasting, scarifying, grinding, acid etching and more



Range	0–6 mm 0–250 mils	
	Accuracy	
		$\pm(25 \mu\text{m} + 1\%)$ $\pm(1 \text{ mil} + 1\%)$
Tip	Angle	60°
	Radius	500 μm (20 mils)

Conforms to ASTM D8271

Rugged Features...

Sealed USB Port
for communicating
with a PC or Mac

Water and dust
resistant

WEATHERPROOF

High contrast color
LCD with backlit display

Scratch/solvent/impact
resistant lens

Multi-function
navigation button

Solvent, acid, oil
resistant, high grade,
industrial strength
housing

**Integral Probe
shown**

Alumina wear face
and tungsten carbide
tip for long life and
continuous accuracy

All probes feature a durable Alumina
wear face and tungsten carbide tip
for long life and continuous accuracy.
Cabled (SPG S) probe shown.

All Gages Come Complete with glass zero
plate, metal check shim, protective rubber
holster with belt clip, wrist strap, 3 AAA
alkaline batteries, instructions, nylon
carrying case with shoulder strap,
protective lens shield, Long Form
Certificate of Calibration traceable to
PTB, USB cable, PosiSoft Software,
two (2) year warranty on body and probe.

Size: 137 x 61 x 28 mm (5.4" x 2.4" x 1.1")
Weight: 140 g (4.9 oz.) without batteries

Conforms to ASTM D4417-B, ASTM D8271 (SPG TS only), AS 3894.5-C
(with optional 30° tip), U.S. Navy NSI 009-32, SANS 5772 and others



Ordering Guide

Application	Blasted Steel		Convex Surfaces	Textured Coatings	Concrete Surface Profile
Probe Type	Integral	Cabled			
Standard	SPG 1	SPG S1	SPG OS1	SPG CS1	SPG TS1
Advanced	SPG 3	SPG S3	SPG OS3	SPG CS3	SPG TS3
Probe Only	PRBSPG	PRBSPGS	PRBSPGOS	PRBSPGCS	PRBSPGTS

Options

Certified SPG Standards

to verify the accuracy and operation of surface profile depth micrometers — an important component in fulfilling both ISO and in-house quality control requirements.

- Ideal for use in calibration labs
- Standards consist of 4 sapphire test plates mounted in a precision ground steel base and supplied in a hard shell case
- Sapphire test plates are individually serialized for traceability to PTB — includes a Certificate of Calibration
- Certified and labeled in both Metric and Imperial units



Order Code	Approximate Depth				Accuracy
	Plate 1	Plate 2	Plate 3	Plate 4	
STDSPG	0	50 µm (2 mils)	175 µm (7 mils)	500 µm (20 mils)	± 1.25 µm (± 0.05 mils)

COMES COMPLETE with a precision ground steel base, 4 sapphire test plates, sample certificate of accuracy, hard shell carrying case and a Certificate of Calibration traceable to PTB.

PosiTector Probes

PosiTector bodies accept all PosiTector probes easily converting from a coating thickness gage to a surface profile gage, dew point meter, soluble salt tester, hardness and ultrasonic thickness gage.



Large V-groove Adaptor

for enhanced stability on 30-45cm (12-18") OD pipes (for SPG OS only)

Replacement Non-Certified Metal Check Shim and Glass Zero Plate

provides a quick accuracy check of the instrument and allows the user to perform practice measurements

Replacement Tungsten Carbide Probe Tips

two angles available — 60° or 30°, field replaceable

Bluetooth™ Printer

receives data from Advanced Models

Rechargeable Batteries

a set of eneloop NiMH AAA batteries

AC Power Kit

for continuous operation or battery charging — works in any country

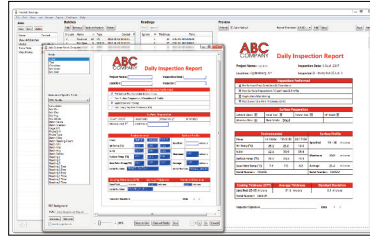
PosiSoft® Suite of Software

Four FREE and unique ways to view and report your PosiTector and PosiTest data

PosiSoft Desktop — PC/Mac

Powerful desktop software for downloading, viewing, printing and archiving measurement data. No internet connection required.

- Import readings directly from the gage via USB or from legacy PosiSoft desktop versions
- Synchronize measurement data including readings, notes and pictures to and from PosiSoft.net
- Import/Export Templates and Jobs to share with other users
- Import PDF forms and overlay **Custom Fields** for automatic population of inspection and measurement data
- Report preview automatically refreshes as changes are made



Prompted Batch Mode

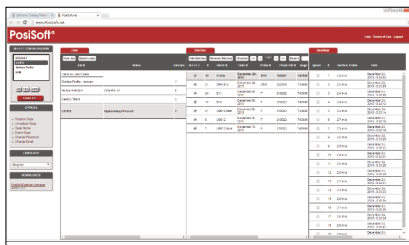
Create pre-defined batches with onscreen text and image prompts for each reading and upload to PosiTector 6000 gages (*Advanced models only*).

- Ideal for ensuring a consistent measurement pattern for repetitive jobs or when specific measurement locations are required
- Create and store multiple templates for different jobs

PosiSoft.net — Web-based

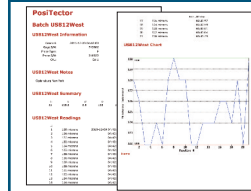
A web-based application offering secure centralized management of readings. Access your data from any web-connected device.

- Synchronize data when connected via USB or WiFi
- Synchronize measurement data including readings, notes and pictures with PosiSoft Desktop and PosiTector App
- Securely store measurement data in the cloud and share with authorized users via a secure login



Jobs Batches Readings

PosiSoft USB Drive — Gage Based



A simple gage interface to retrieve data in a manner similar to USB flash drives, cameras, or digital audio players. No software to install or internet connection required.

- View and print readings and graphs using universal PC/Mac web browsers and file explorers
- Measurement data can be printed quickly from a formatted HTML report or exported in .CSV format for further analysis in spreadsheets
- Simple file management - Copy and paste measurement data from the PosiTector to a local folder on your computer, network folder or cloud drive
- Access stored screen captures (snapshots) of the PosiTector display

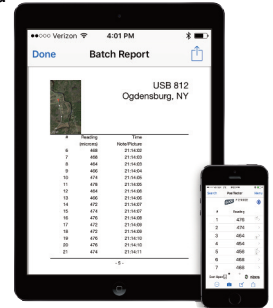


PosiTector and PosiTest AT-A instruments can integrate with third-party software, drones, ROVs, PLCs, and robotic devices using several industry-standard communication protocols.

PosiTector App — Mobile

Mobile app connects PosiTector Advanced instruments, the PosiTector SmartLink and the PosiTest AT-A to your *iOS* or *Android* smart device.

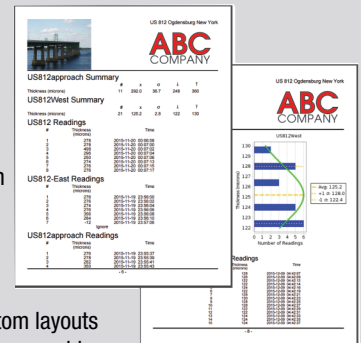
- Auto pairing Bluetooth BLE connection
- Automatically generate user-formatted reports and share via email, text, cloud storage services like Dropbox, and more
- Export readings to PosiSoft Desktop or synchronize readings to and from PosiSoft.net for further reporting and archival options



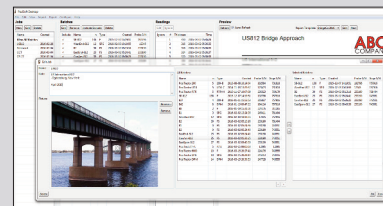
PosiSoft Custom PDF Report Generator

Easily create reports from your measurement data in seconds.

featured on
PosiSoft Desktop
PosiSoft.net
PosiTector App



- Include inspection information such as on-site pictures, screen captures, notes and more to communicate important details
- Create and save multiple custom layouts as templates – insert cover pages, add logos/images, and select font and point size
- Select the information to include for each product type – charts, histograms, readings, time stamps and more
- Compile multi-batch reports from one or more probes and instrument types
- Export readings as comma separated value (.CSV) files which can easily be imported into Excel and other supporting applications



Jobs feature consolidates batches into groups to keep measurement data organized and to quickly create multi-batch reports (not available on PosiTector App)

PosiTector Developer Resources

including Bluetooth 4.0, WiFi, USB Keyboard, and USB Serial

DeFelsko®
The Measure of Quality

DeFelsko Corporation • 800 Proctor Ave. • Ogdensburg, New York 13669-2205 USA
Toll Free 1-800-448-3835 • Tel: +1-315-393-4450 • Fax: +1-315-393-8471
techsale@defelsko.com • www.defelsko.com

Made in U.S.A.



INSTRUMENTOS DE MEDICIÓN INDUSTRIAL



LLÁMANOS

+52(81) 8115-1400 / +52 (81) 8173-4300

LADA Sin Costo:
01 800 087 43 75

E-mail:
ventas@twilight.mx

www.twilight.mx



/ [twilightsadecv](#)



/ [twilightsadecv](#)



/ [twilightsadecv](#)