

twilight

INSTRUMENTOS DE MEDICIÓN INDUSTRIAL

Cámara Termografica GS-D192M

www.twilight.mx



/ [twilightsadecv](#)



/ [twilightsadecv](#)



/ [twilightsadecv](#)

D Series

Intelligent Thermal Camera

Intelligent Operation Affordable Price

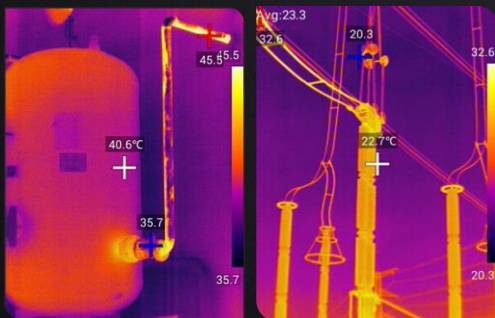


Introduce

D Series intelligent thermal camera is simple, compact and ergonomic. It equipped with 4-inch high-brightness touchscreen, Android operating system, user-friendly UI for easy operation. And every step has professional tips, so that the first user can become an expert quickly. With high IR resolution and various powerful functions, D series is the ideal thermal inspection tool for power inspection, equipment maintenance and building diagnostic applications.

Features and Benefits

- 4" high light touch screen, all operation can be completed on the touch screen
- You can choose the proper lens for different occasions
- Built-in illuminator, take visible photos in the low lighting environment
- Removable SD card, Up to 32G storage capacity
- Wi-Fi communication, share IR images and findings immediately
- Connected with mobile terminal to take IR photo, to achieve multi screen control



Application

- Mechanical maintenance
- Building diagnostic
- Telecom equipment inspection
- Electrical equipment inspection

Specifications

Model	D192F	D384F	D192M	D384M	D384A
IR Imaging Performance					
IR resolution	192×144	384×288	192×144	384×288	384×288
Detector type	VOx/25μm/7.5~14μm				
Frame rate	25Hz/9Hz				
NETD	50mk	45mk	50mk	45mk	40mk
Focal length	7mm/F1.1	19mm/F1.0	7mm/F1.1	19mm/F1.0	15mm/F1.1
Field of view(FOV)	37.8°×28.8°	28.4°×21.5°	37.8°×28.8°	28.4°×21.5°	35°×27°
Spatial Resolution(IFOV)	3.45mrad	1.29mrad	3.45mrad	1.29mrad	1.60mrad
Min focus distance	1m	1m	0.5m	0.5m	0.4m
Focus	Focus-free		Manual		Electric/ Automatic
Lens identification	N/A		Manual		N/A
Optional lens (* Focal length/ FOV / IFOV / Min focus distance @ Temp Range)					
Wide angle*	N/A	N/A	N/A	8.8mm/F1.0/ 57°×45°/ 2.65mrad/0.3m	N/A
Tele*	N/A	N/A	19mm/F1.0/ 14.4°×10.8/ 0.65mrad/1m	40mm/F1.2/ 13.7°×10.3/ 0.62mrad/1m	N/A
High temp®	N/A	N/A	650°C~1500°C	650°C~1500°C	N/A
Visual Camera					
Visual Camera	Resolution:5MP/ 640×480, Alternative, Focus-free, FOV 25°×19°				
Image Presentation					
Display	4" highlight LCD touch screen, 480×800, 24 bits				
Image modes	IR image/ Visual image MIF/ PIP				
Color Palettes	8:White Hot, Fulgurite, Iron Red, Hot Iron, Medical, Arctic, Rainbow 1, Rainbow 2				
Digital zoom	1.1~4				
Super-resolution	N/A	Yes, 768 x 576	N/A	Yes, 768 x 576	
Level Span	Auto, Semi-automatic, Manual				
Panorama image mosaic	N/A			Yes	
Measurement					
Temperature range	-20°C~350°C		-20°C~150°C, 100°C~650°C, 650°C~1500°C(High temp lens is optional)		-20°C~150°C, 100°C~650°C
Accuracy	±2°C or ±2% of reading for ambient temperature 15°C to 35°C and object temperature above 0°C				
Measurement Area (IR/PIP)	5 X Spot; 2 X Line;; 5 X Area				
Auto Max & Min Temp Tracking (IR/PIP)	1. Full screen max temp, min temp, max+min temp, max+min+average temp tracking 2. Analysis object max temp, min temp, max+min temp, max+min+average temp, average temp tracking				
Alarm	Max temp alarm; Min temp alarm				
Storage					
Image storage	In camera and TF card, JPG with temp info				
Video format without temp info	H.264 with frame rate 25Hz (audio signal included)				
Video format with temp info	.irgd with frame rate 25Hz (audio signal excluded)				
Video Streaming	Yes, transferred to PC or mobile via USB or Wi-Fi				
Connections & Communications					
Data communication interface	MICRO USB 2.0, MICRO HDMI, Power(12V), TF card(Standard 16G, up to 32G); WiFi/Laser				
Bluetooth	N/A			Yes	
Power system					
Battery type/Operating time	Rechargeable Li-ion battery (7.2V), ≥4h; 4h in camera, 5h in dual-bay charger; Automatic shut-down and sleeping mode				
Environmental Parameters					
temperature range	Operating: -10°C~50°C; Storage: -40°C~70°C				
Encapsulation	IP54				
Certification	CE, FCC, ROHS				
Weight	735g	735g	840g	840g	735g
Dimensions(mm)	274×97×78	274×97×78	274×106×78	274×110×78	274×91×78
Standard Accessories	Li-ion battery, Power supply adapter, Adapter plug, Wrist strap, USB cable, HDMI cable, Quick Start Guide, User Manual, Data Download Card, Capacitive screen gloves, TF card (16GB), Hard transport case				
Optional Accessories	Li-ion battery, Pouch, Battery charger, Tripod mount interface, Sunshield, Bluetooth earphone, Extended lens				

twilight

INSTRUMENTOS DE MEDICIÓN INDUSTRIAL



LLÁMANOS

+52(81) 8115-1400 / +52 (81) 8173-4300

LADA Sin Costo:
01 800 087 43 75

E-mail:
ventas@twilight.mx

www.twilight.mx



/ [twightsadecv](https://www.facebook.com/twightsadecv)



/ [twightsadecv](https://twitter.com/twightsadecv)



/ [twightsadecv](https://www.youtube.com/twightsadecv)