

twilight

INSTRUMENTOS DE MEDICIÓN INDUSTRIAL

Termohigrometro marca Huato con WIFI y con sensor externo

HT-S500EXWIFI

www.twilight.mx

 / [twilightsadecv](#)

 / [twilightsadecv](#)

 / [twilightsadecv](#)

Tomonitor

atmospheric environmental temperature and humidity monitoring solutions

Temperature • Humidity • Gas • PM2.5 • Pressure • Illuminance • Noise • Wind speed • Weather station

WiFi solution

WiFi temperature and humidity monitoring solution

Product introduction

Working principle of S500-WiFi temperature and humidity data logger: only a working WiFi network and a device (smart-phone/tablet/PC) that can access Internet is needed for the building of a real-time temperature and humidity monitoring system, as long as you can access the Internet, you can monitor temperature and humidity, no matter where you are. This is a real Industrial class monitoring system.



Standard Accessories



Applications

Mainly applied in the following fields: pharmaceuticals, Electronics, transportation, warehouse, research institutions, Meteorology, commercial building, supermarket, professional lab, Museum, library and textile industry.

WiFi temperature and humidity monitoring solution

network topology

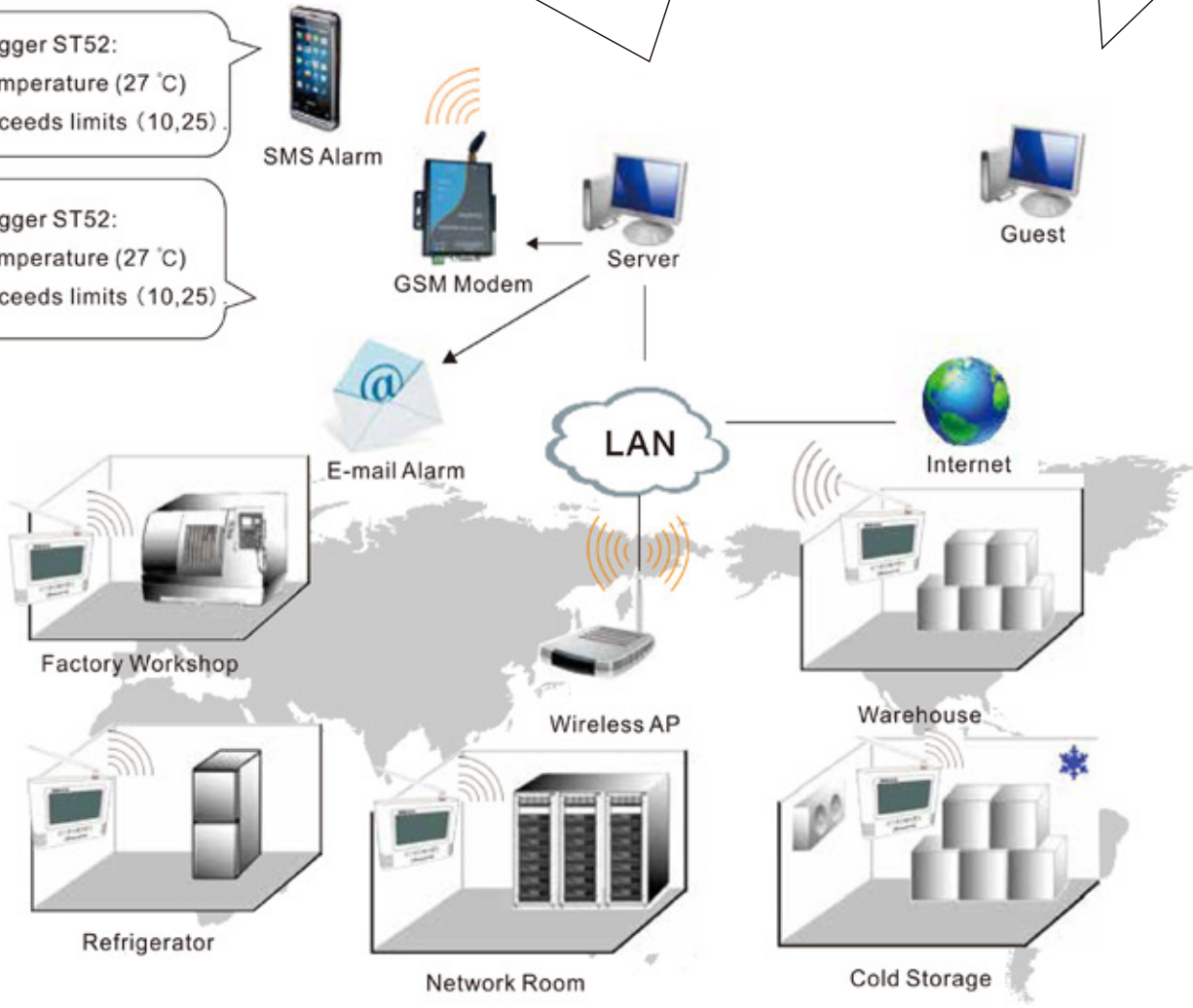
There are many monitoring base station in this system, it adopt TCP/IP protocol to ensure networking reliability and use Ethernet and wireless hybrid networking. The base station collects data and transmit it to Tomonitor server in real-time.

This system adopt client/server framework, it will not be affected when some monitoring points are out of order. We greatly improved system reliability by unite monitoring, independent measurement and control. Below is the network topology of this system.

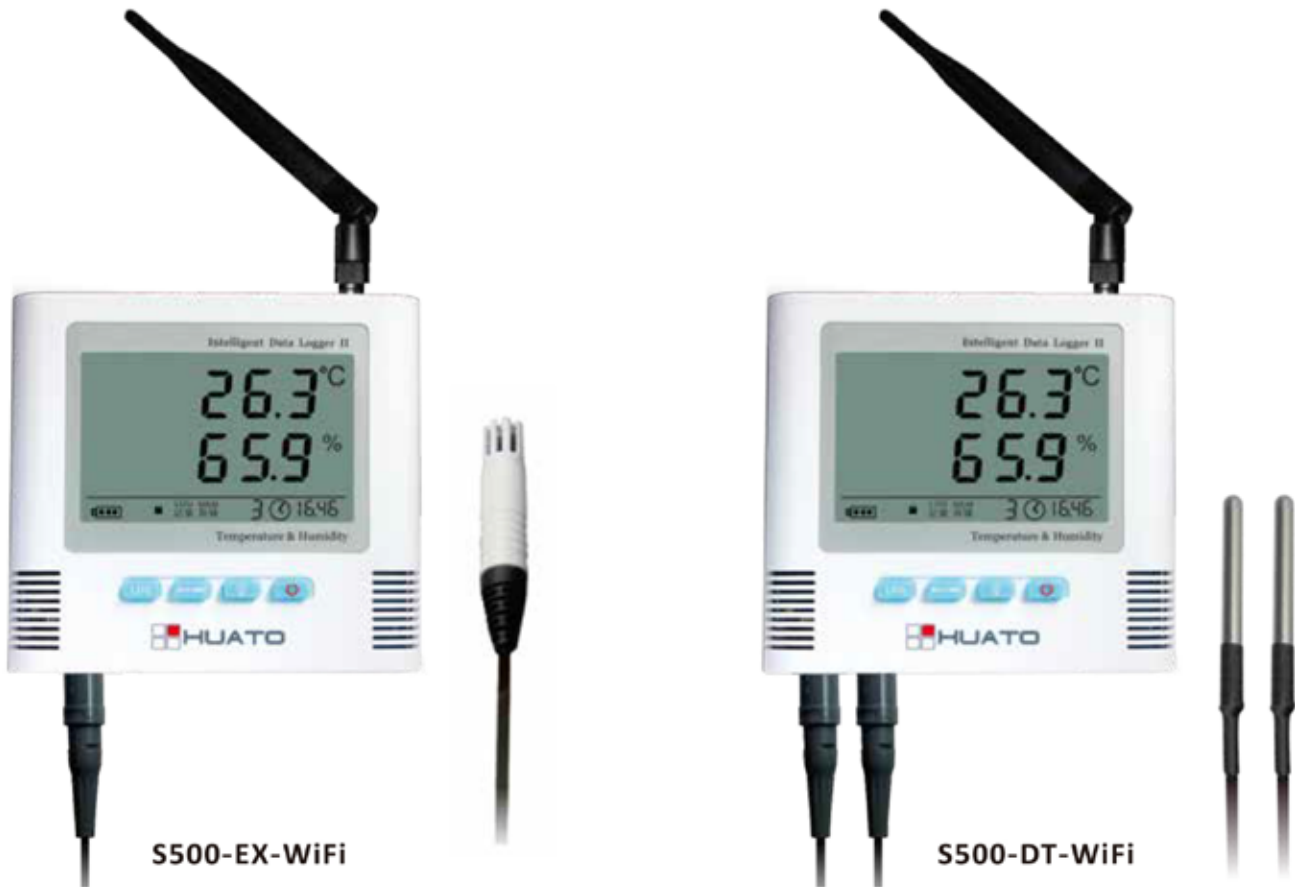


Logger ST52:
Temperature (27 °C)
Exceeds limits (10,25)

Logger ST52:
Temperature (27 °C)
Exceeds limits (10,25)



WiFi temperature and humidity monitoring solution



Device features

- ◆ Wireless WiFi technology
- ◆ Transmission distance: up to 100m
- ◆ Recorded readings upload automatically
- ◆ Real-time monitoring on your PC
- ◆ Dimensions: 135mm*128mm*35mm
- ◆ Display dimensions: 97mm*78mm
- ◆ Interval Logging: 2s ~ 24h
- ◆ Battery: 9V battery
- ◆ Switzerland /USA imported sensor

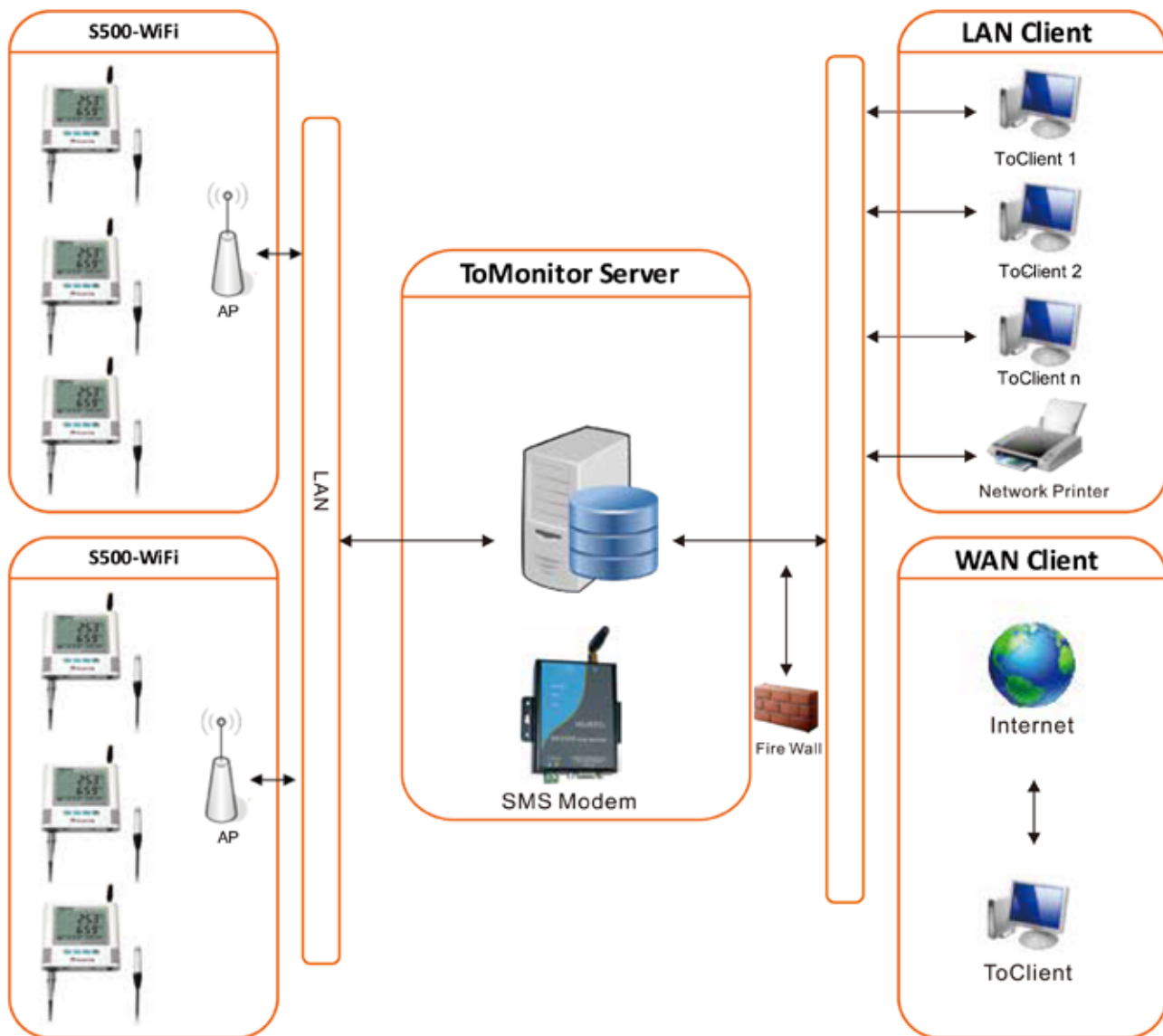
Model	Sensor Type	Range	Accuracy	Memory
S500-EX-WiFi	External sensor	-40~+85°C 0~100%RH	±0.5°C ±5%RH	65,000
S500-ET-WiFi	External sensor	-40~+85°C	±0.5°C	
S500-DT-WiFi	3M double external temperature sensor			
S500-EPT-WiFi	3M Pt100 single external temperature sensor	-100~+200°C	±0.5°C	
S500-DPT-WiFi	3M Pt100 double external temperature sensor			

WiFi temperature and humidity monitoring solution

network topology

There are many monitoring base station in this system, it adopt TCP/IP protocol to ensure networking reliability and use Ethernet and wireless hybrid networking. The base station collects data and transmit it to Tomonitor server in real-time.

This system adopt client/server framework, it will not be affected when some monitoring points are out of order. We greatly improved system reliability by unite monitoring, independent measurement and control. Below is the network topology of this system.



Note: Toclient is a client software, user can use it to view real-time data and look up historic data.

Tomonitor monitoring system includes 3 parts: user layer(monitring), control layer(computer room) and device layer(warehouse and showroom). Tomonitor is an easy to control, fully automatic, high precision system which fully meets the requirements of temperature and humidity monitoring.

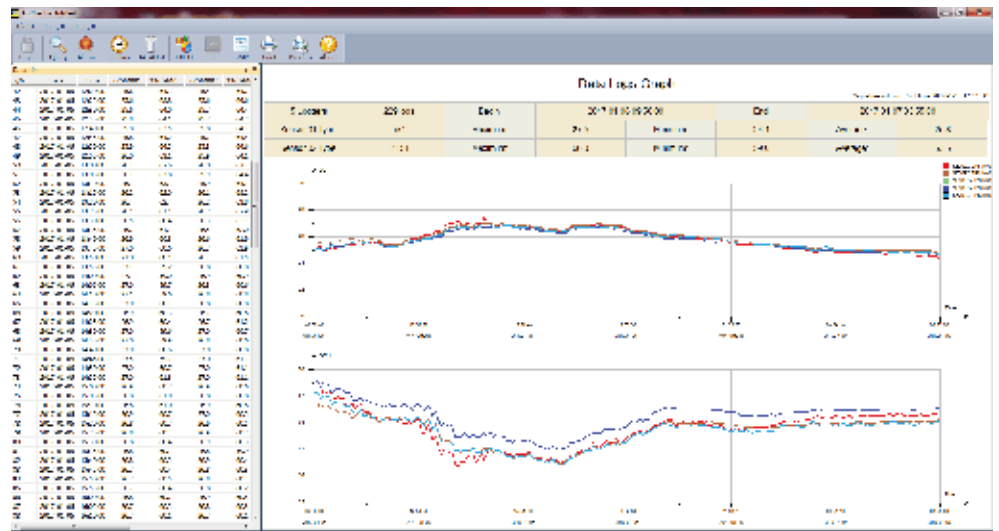
ToMonitor software for networking

1. Alarm users when data value exceeds limits, device went offline or there's power failure. Alarm the administrator when the device stopped uploading data for a certain time.
2. Each monitoring point supports up to four kinds of sensors, sensor's resolution can be set by users
3. It is a highly extendable system, supports RJ45, GPRS, RS485, wireless devices hybrid networking.
4. ToMonitor take full advantage of multi-core CPU, it supports multi-thread processing and successfully increases system throughput rate. When sending a message or alarm, it will not affect system performance.



ToClient software

1. The system adopts the client/server architecture to support internal LAN access, users does not need to go to the server room to download data.
2. Instruments/Relay subnet networking, unmanned operation, easy to add new devices.
3. encrypted data transmission effectively prevent data leakage.
4. Providing real-time data list display and curvilinear graphical display function, users can view real-time monitoring data and running information of monitoring points.



twilight

INSTRUMENTOS DE MEDICIÓN INDUSTRIAL



LLÁMANOS

+52(81) 8115-1400 / +52 (81) 8173-4300

LADA Sin Costo:
01 800 087 43 75

E-mail:
ventas@twilight.mx

www.twilight.mx