

twilight

INSTRUMENTOS DE MEDICIÓN INDUSTRIAL

Boroscopio para tubería con cámara WO-VIS350PLUS

www.twilight.mx



/ [twilightsadecv](https://www.facebook.com/twilightsadecv)



/ [twilightsadecv](https://twitter.com/twilightsadecv)



/ [twilightsadecv](https://www.youtube.com/twilightsadecv)

VIS 250 and VIS 350

Portable video inspection systems for defect analysis



VIS 250 and VIS 350

– the next generation of building and facility video inspection system



The new video inspection units VIS 250 and VIS 350 are advancements of our existing visualization systems.

Using the small, portable, and bend-negotiating inspection camera VIS 250 or VIS 350, you can analyze defects in pipes and other cavities easily and with an independent power supply. The complete system in the twin-shell case is compact and battery operated. The high-light-intensity camera head takes a close look when analyzing defects in pipes, inspecting cavities, and checking downspouts, ventilation pipes, and exhaust pipes.

The camera head's great mobility also ensures that it can easily navigate bends. Even multiple bends up to 87° in the course of a pipe are no problem for the VIS 250 or VIS 350.

A special highlight is the VIS 350's rotating camera head with pan/tilt function, offering a high degree of freedom during visual inspection.

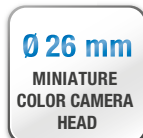
VIS 250 and VIS 350 allow transparent, on-site defect diagnostics and the competent analysis of hidden defects in pipes and any other areas that are difficult to access. Both systems feature easy, user-friendly operation and are rapidly ready for use. The integrated video storage allows complete documentation of the inspection work.

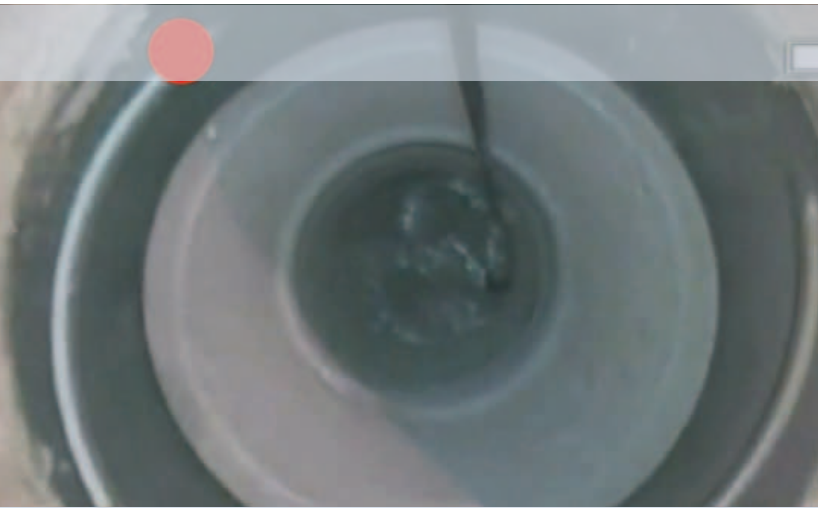




Advantages

- Versatile
- Optional photo and video storage for documentation
- Very flexible, particularly at the distal tip
- Bright (light intensity adjustable via a button)
- Compact (one case)
- Plug and Play, with fast setup and operation (less than one minute)
- Modern design
- Smart power management concept





Robust twin-shell case

The compact and lightweight double-walled hard case reliably protects the camera, monitor, and accessories

Digital meter display

For localization, the unreeled length is electronically registered and displayed in the image

Video output

For transmission to an external monitor

USB connection

For connecting to your PC

Card slot

For direct storage of your videos on the 2GB SD card

2 high-performance rechargeable batteries

Space for 2 NiMH rechargeable batteries (12V) with a life of 2 hours each, for maximum freedom of motion while working. No memory effect. Main battery charged directly in case for convenience.





Battery indicator

Displays the current charge status

Color monitor

The high-resolution 7" TFT color widescreen monitor is tiltable and detachable and supplies high resolution images in widescreen format

Position and angle indicator

Always indicates up/down in the pipe as well as the angle by which the camera is guided upward or downward

Color camera head

Integrated location transmitter for precise defect location

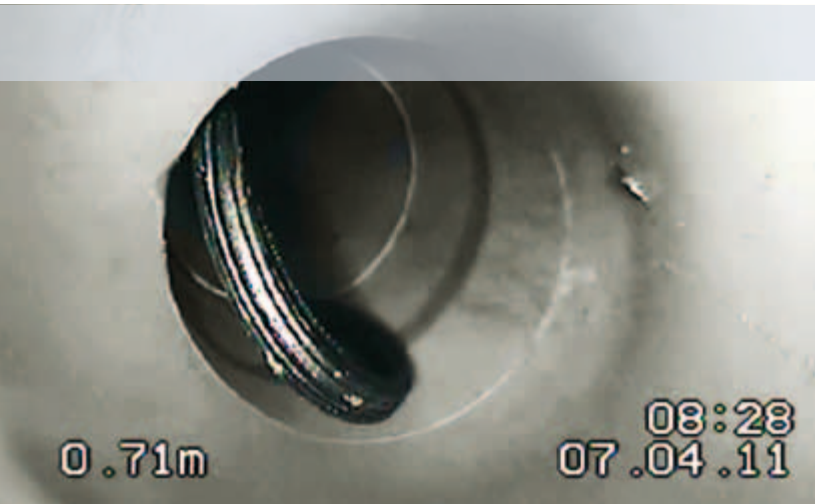
Push rod

The GFRP rod can be extended to 20 m

Control panel

Practical thanks to simple menu navigation and intuitive control of camera movement in VIS 350

Technical data



	VIS 250	VIS 350
Monitor		
Housing dimensions	176 x 114 x 32 mm	176 x 114 x 32 mm
TFT	7" color TFT display / 16:9 or 4:3 format	7" color TFT display / 16:9 or 4:3 format
Detachable	Yes, up to 2m	Yes, up to 2m
Weight	400 g	400 g
Power supply		
Power supply unit	Integrated in the case system	Integrated in the case system
Battery operation	Exchangeable 12V rechargeable battery	Exchangeable 12V rechargeable battery
Additional rechargeable battery	Optional, must be ordered separately	Second rechargeable battery included in set
Battery indicator	On display	On display
Life	Max. 2 rechargeable batteries per 120 min	Max. 2 rechargeable batteries per 120 min



Miniature camera head		
Type	1/3" COLOR CMOS	1/3" COLOR CMOS
Resolution	768 x 576 (PAL), 656 x 492 (NTSC), max 30 fps	768 x 576 (PAL), 656 x 492 (NTSC), max 30 fps
Light sensitivity	0.5 Lux	0.5 Lux
Objective lens	f = 2.3 mm, F = 2.5	f = 2.3 mm, F = 2.5
Image capture angle	150° diagonally, 100° horizontally, and 80° vertically	150° diagonally, 100° horizontally, and 80° vertically
Adjustable/steerable/ rotating head	No, fixed	Yes, 180° tilt and 360° pan
Digital position and angle display of the camera head	No	Yes
Light source	12 white LEDs	12 white LEDs
Protection rating (camera head and push rod)	Waterproof certified to IP 68	Waterproof certified to IP 67



Miniature camera head		
Dimensions	Ø 26 mm x 38 mm	Ø 40 mm x 60 mm
Weight	240 g	315 g
Operating temperature Storage temperature	0...40 °C, RH 95% max -20...50 °C, RH 95% max	0...40 °C, RH 95% max -20...50 °C, RH 95% max
Length measurement	Electronic meter counter with display / 0.04 m resolution / +-10%	Electronic meter counter with display / 0.04 m resolution / +-10%



Documentation		
Date and time display	Yes	Yes
SD memory card slot	Compatible with cards up to 32 GB	Compatible with cards up to 32 GB
Data storage	2 GB SD card	2 GB SD card
Still image file format	Jpeg	Jpeg
Image sequence file format	ASF (MPEG 4)	ASF (MPEG 4)
Data interface	Mini USB	Mini USB
Video signal output	Composite signal	Composite signal



Twin-shell system case		
Dimensions [l x w x h]	51 x 43 x 17 cm	51 x 43 x 17 cm
Weight	7 kg	8.2 kg
GFRP push rod with length marks		
Length	20 m	20 m (optionally 30 m)
Diameter	6 mm	6.5 mm
Locator-transmitter		
Transmission frequency	8.9 kHz	8.9 kHz



	VIS 250	VIS 350
Push rod	20 m	20 m (optionally 30 m)
Camera head	Fixed	Tilting with "HOME function"
Locator	No	Optional
Recording	SD	SD
Application	<ul style="list-style-type: none"> • Exhaust pipes Ø 40 mm and larger • Ventilation systems Ø 40 mm and larger • Defect analysis in wastewater pipes from Ø 40 mm to Ø 125 mm 	<ul style="list-style-type: none"> • Exhaust pipes Ø 60 mm or larger, with bends up to 87° • Wastewater pipes Ø 70 mm or larger • Chimneys • Ventilation systems Ø 60 mm and larger • Defect analysis in wastewater pipes Ø 70 mm or larger

VIS 250 and VIS 350 with related accessories



81270250

VIS 250 Video Inspection Service Camera, with electronic meter and video memory in complete plastic case, with color camera head diameter 26 mm, TFT widescreen color monitor and 2 m connecting cable (removable monitor), 20 m push rod diameter 6 mm, 1 anti-slip mat, mini-USB cable, 2 GB SD card, 1 rechargeable NiMH battery with charger

Accessories

81270230

Spare Battery, 12 V, NiMH 2600 mAh, for VIS 250/VIS 350, battery operating life approx. 120 min



81270240 Z

VIS Guidance Set 70, for VIS 240/VIS 250 miniature camera head diameter 26 mm, to guide GRP camera rods as of pipe diameters 70 mm to 200 mm. The exchangeable outer brushes can be cut to various diameters. Guidance set includes:
Centering star, guidance sleeve with protection cage



81270350

VIS 350 Video Inspection Service Camera, with electronic meter and video memory in complete plastic case, with pan/tilt color camera head diameter 40 mm V2, SD memory card 2 GB and mini-USB cable, TFT widescreen color monitor and 2 m connecting cable (removable monitor), 20 m push rod diameter 6.5 mm, 5 replacement plastic domes, 1 anti-slip mat, 2 NiMH rechargeable batteries and charger



81270350 Z

VIS Guidance Set 100, for VIS 350 pan/tilt camera head diameter 40 mm including:
Protective Dome with Cut-Out
Roller Guide
Centering Star



81270355

L200 Locator Receiver, plastic case, USB power supply with mini-USB cable, marking chalk (package of 12, yellow), telescopic rod and headphones

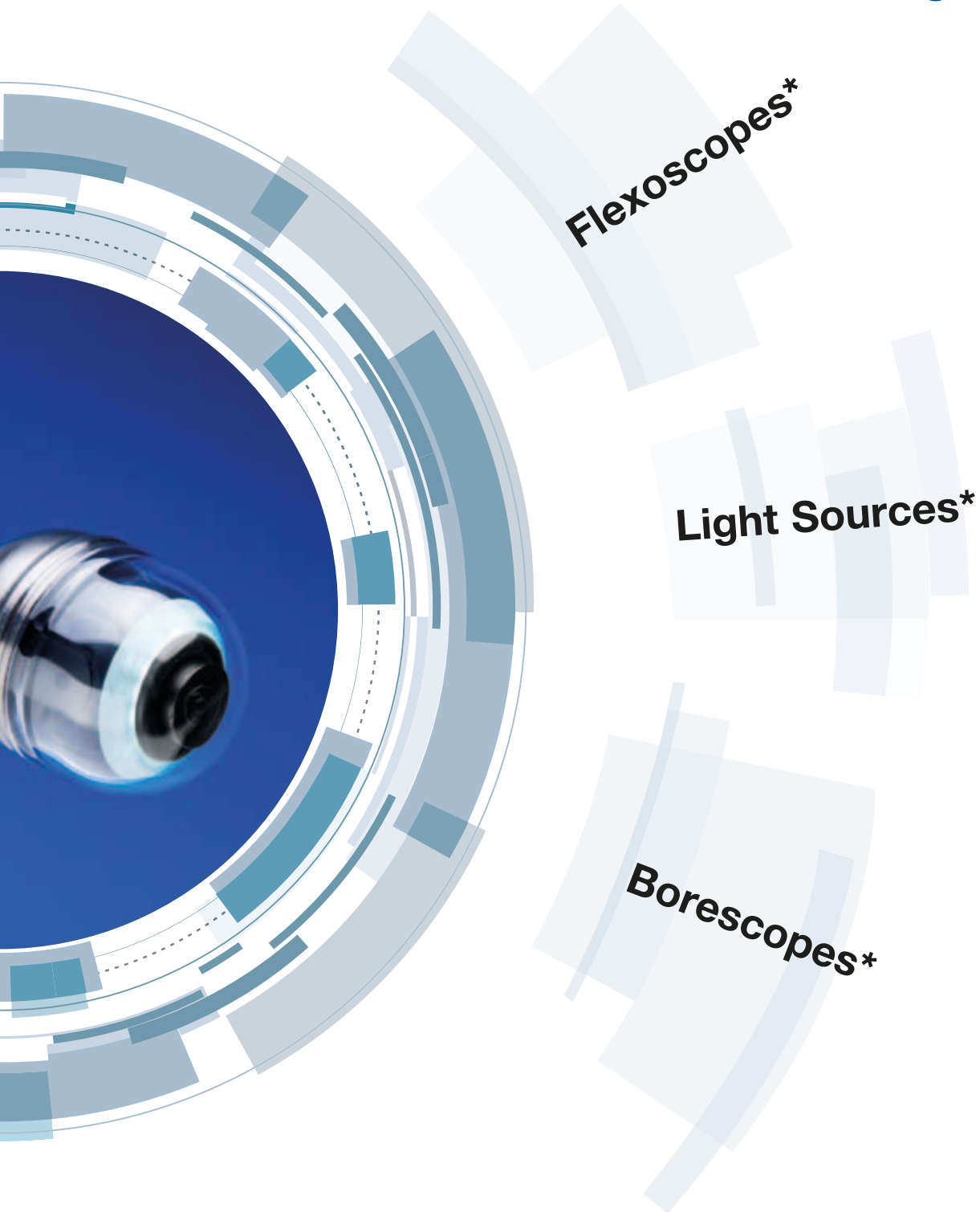


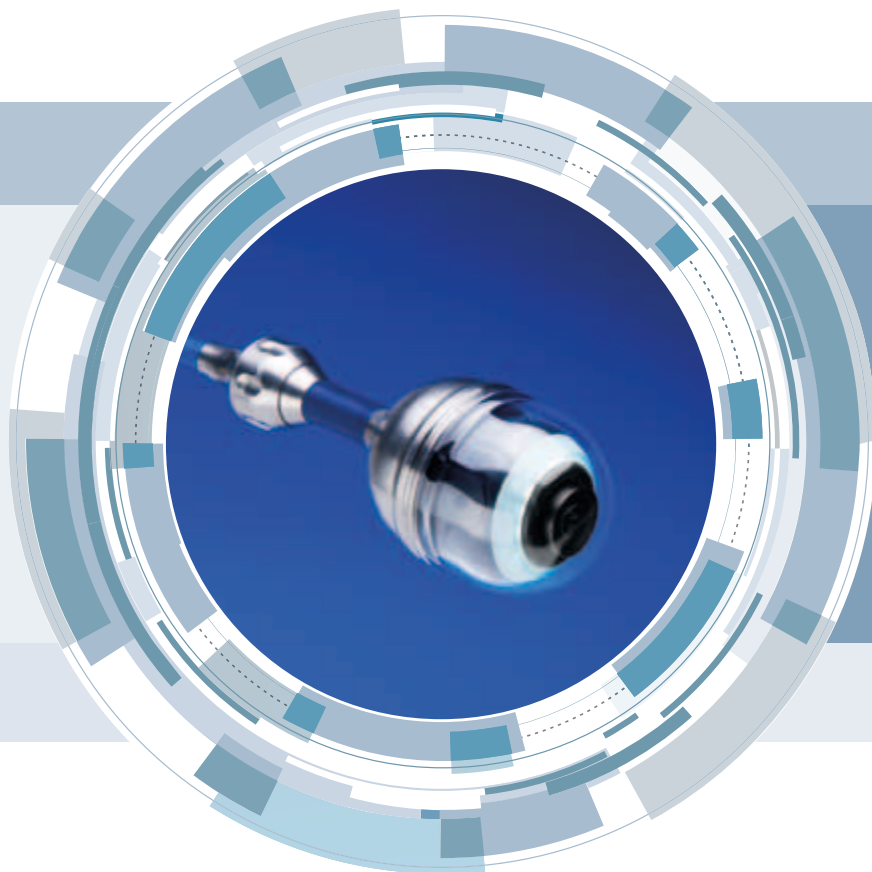
**Measurement
Systems and
Documentation***

Videoscopes*

**Portable
Systems***

Product groups





twilight

INSTRUMENTOS DE MEDICIÓN INDUSTRIAL



LLÁMANOS

+52(81) 8115-1400 / +52 (81) 8173-4300

LADA Sin Costo:
01 800 087 43 75

E-mail:
ventas@twilight.mx

www.twilight.mx



/ [twightsadecv](https://www.facebook.com/twightsadecv)



/ [twightsadecv](https://twitter.com/twightsadecv)



/ [twightsadecv](https://www.youtube.com/twightsadecv)